

**FOR IMMEDIATE RELEASE****Media Contact:**

Alicia A. Gutierrez  
Marketing and Promotions Coordinator  
661-862-8878, [gutierrez@kerncounty.com](mailto:gutierrez@kerncounty.com)

**Sand Locations in Kern County**

*Free sand is available for residents to prepare their property against potential flooding*

**KERN COUNTY, Calif.** February 12, 2025 – Kern County Public Works has delivered sand to nine (9) locations throughout Kern County in anticipation of the forecasted storm and heavy rainfall. Each location has a pile of sand and residents will need to supply their shovels and sandbags. Empty sandbags can be purchased at local hardware stores.

Below are location details and **Google Maps Plus Codes** that can be plugged into the Google Maps search bar to give an exact location as seen in the location pin images on pages 2, 3, and 4.

**Bakersfield Sandbag Station**

Exit from Alfred Harrell Highway onto Goodmanville Access Road. On the east side of Alfred Harrell Highway.

**Google Maps Plus Code:** C3P9+QF9 Bakersfield, California

**Frazier Park Sandbag Station**

At the intersection of Mt. Pinos Way and West End Drive, head northbound on West End Drive.

**Google Maps Plus Code:** R2FQ+F4M Frazier Park, California

**Lake Isabella Sandbag Station**

Located north of the intersection of Kneale Avenue and Suhre Street.

**Google Maps Plus Code:** JGHG+G3C Lake Isabella, California

**Lamont Sandbag Station**

At the intersection of Hall Road and San Diego Street, head northbound on San Diego Street and make a left into the parking lot.

**Google Maps Plus Code:** 736J+848 Lamont, California

**Lebec Sandbag Station**

Just off Exit 207. South end on Lebec Road.

**Google Maps Plus Code:** R4PP+HFR Lebec, California

**McFarland Sandbag Station**

Northwest to the intersection of Elmo Highway and Scheitlin Avenue.

**Google Maps Plus Code:** MQQF+M4H McFarland, California

**Mountain Mesa Sandbag Station**

Head south at the intersection of Dogwood Avenue and McCray Road and the Sandbag Station will be on the right.

**Google Maps Plus Code:** JHMR+P6H Mountain Mesa, California

**Tehachapi Sandbag Station**

On the southeast corner of Tucker Road and Highline Road.

**Google Maps Plus Code:** 4G5M+P2C Tehachapi, California

**Wofford Heights Sandbag Station**

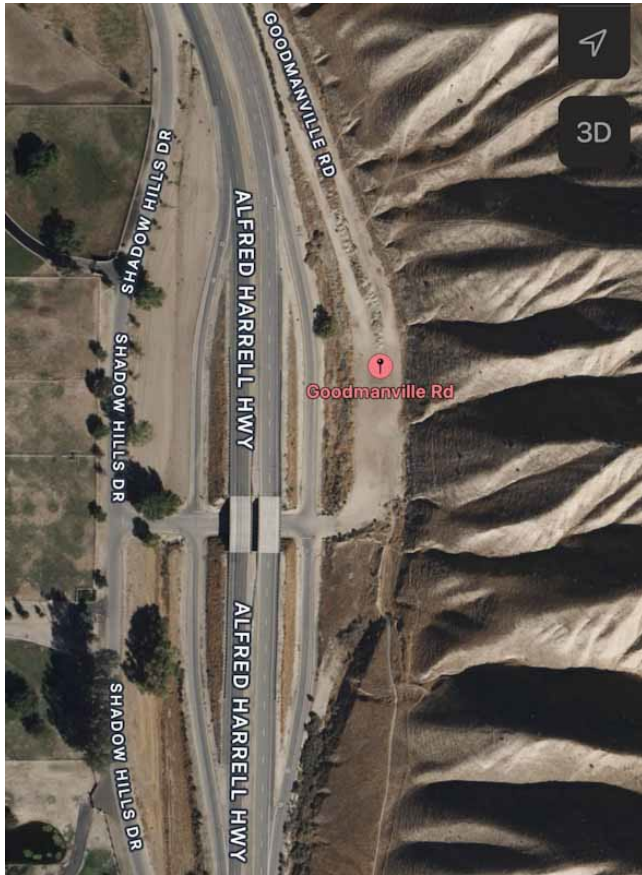
Off East Evans Road, east of Wofford Heights Park, toward the lake.

**Google Maps Plus Code:** PH42+3CP Wofford Heights, California

[MORE]

GROUND  BOUNDLESS

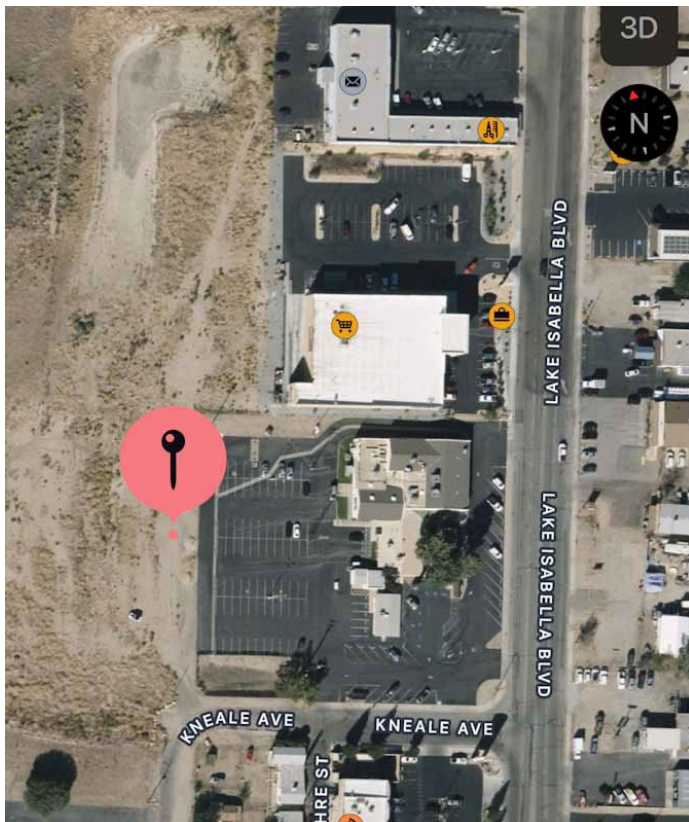
**Bakersfield Sandbag Station**



**Frazier Park Sandbag Station**



**Lake Isabella Sandbag Station**

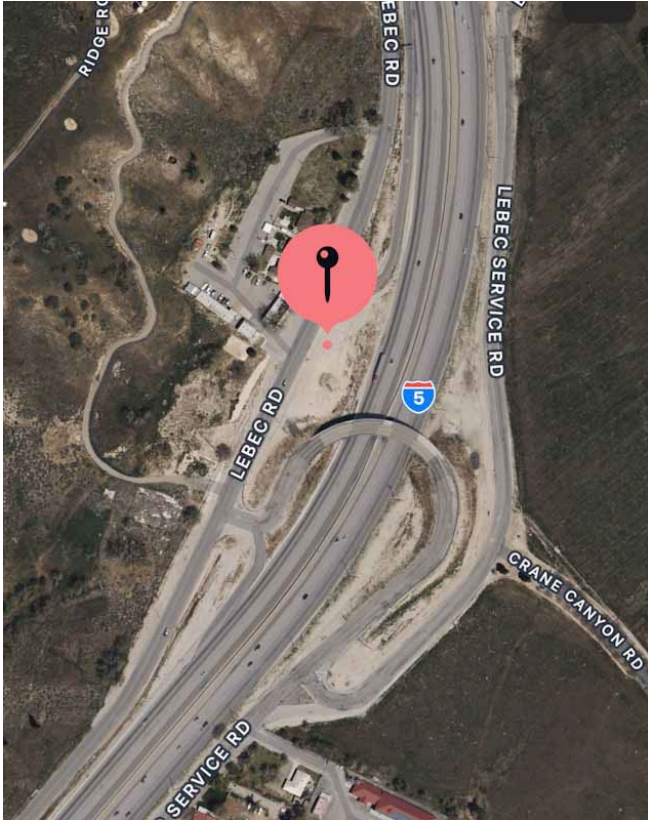


**Lamont Sandbag Station**

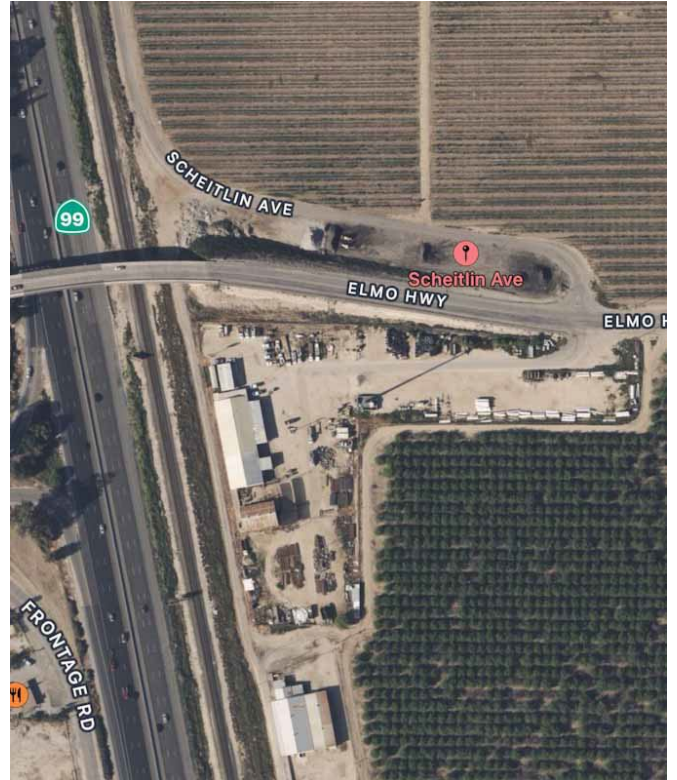




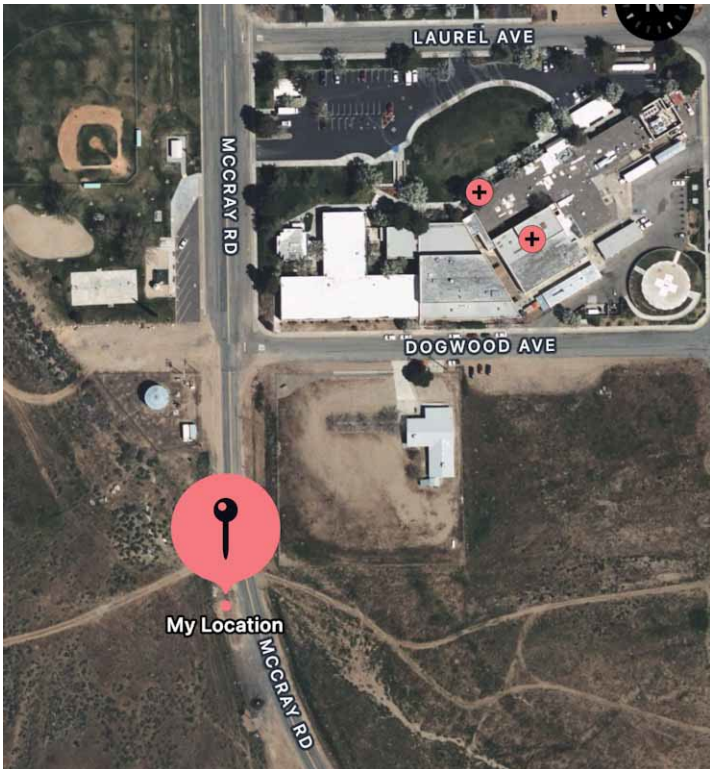
**Lebec Sandbag Station**



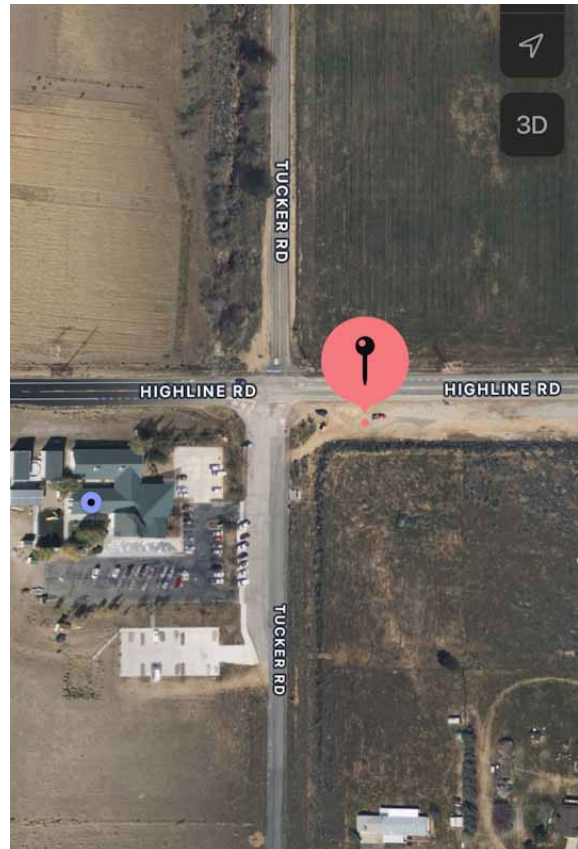
**McFarland Sandbag Station**



**Mountain Mesa Sandbag Station**



**Tehachapi Sandbag Station**



## **Wofford Heights Sandbag Station**



### **County-maintained Road Status and Closures**

<https://www.kernpublicworks.com/services/transportation/road-maintenance>

### **Sand Locations**

<https://www.kernpublicworks.com/services/transportation/road-maintenance/sand-locations>

### **Storm Preparation**

<https://www.kernpublicworks.com/services/transportation/road-maintenance/storm-preparation>

**Kern County Public Works** is a department of the County of Kern and is responsible for the planning, design, construction, maintenance, and operation of roads, bridges, traffic signals, sanitary landfills, and publicly owned facilities. Kern County Public Works strives to provide quality public services including road permit inspection, building permit inspection and plan check, code compliance, engineering and surveying review of proposed land development, solid waste and hazardous waste disposal, wastewater treatment, public transportation, and community outreach, which serve to protect and enhance the lives of the people of Kern County. For more information, visit [www.kernpublicworks.com](http://www.kernpublicworks.com) and follow us on Facebook [@KernCountyPublicWorks](https://www.facebook.com/KernCountyPublicWorks).

###